



Sample - compliments of the Colorado Healthcare Association for Human Resource Management

49. Chapter Partnerships

Work in partnership with another ASHHRA chapter in the leadership competency of “Raise Your Voice – Community Citizenship.” (Examples include: Hold a joint educational or other program, assist another chapter in a related project, work together for a common cause or charity, etc.)

Rathbun, Alisa L

From: Booth, Michael [Michael.Booth@uch.edu]
Sent: Thursday, August 28, 2008 1:09 PM
Subject: 2008 DAHCRA Summer Social
Attachments: UOCH 8-14 8.5x11 Flyer.indd @ 111%.pdf; SignInSummerSocial2008SignIn.xls



**Denver Area Health Care
Recruiters Association**

Thank you for attending our 2008 DAHCRA Summer Social at Cool River Café.

Through your donations - we raised \$700 for the Women's Bean Project of Denver.

Attached is the final attendee list - and sponsor list.

For questions/updates on this list - please email michael.booth@uch.edu.

We look forward to seeing you at our Holiday Social in December.

Dunn, Evonne (Denver)

From: Dunn, Evonne (Denver)
Sent: Friday, August 08, 2008 7:17 AM
To: Michael.Booth@uch.edu
Subject: DAHCRA Summer Social Announcement

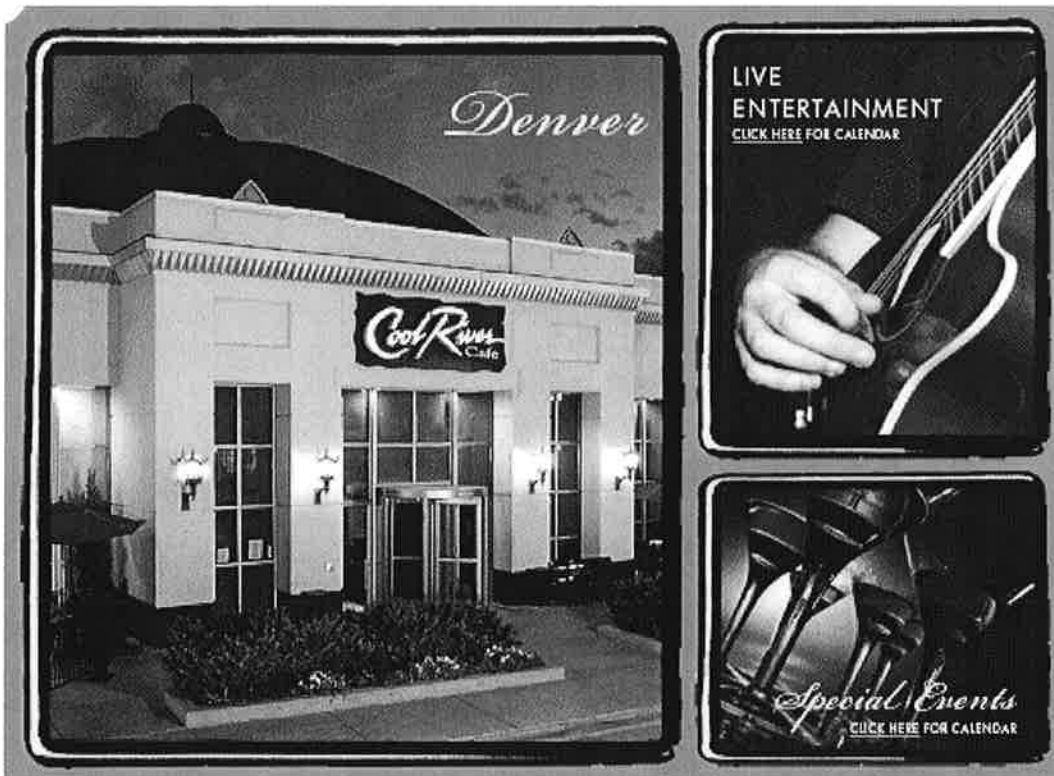
DAHCRA Summer Social Announcement



**Denver Area Health Care
Recruiters Association**

2008
Denver
Area
Health
Care
Recruiters
Association
'Summer Social'

You deserve an afternoon of fun...
Come network with us!



Tuesday, August 12th from 3-6pm
at the Cool River Café' in the Tech Center.

Who you'll meet... health care recruiters, managers, directors, local educators, sponsors and all kinds of

8/18/2008